



# Apple Scanners, Displays, and Printers

Your ideas have never looked better.



Apple Computer, Inc.

**It's never been so easy to make  
your ideas look great.**

When your ideas look good, people take a good look at your ideas. And thanks to Apple's latest generation of scanners, displays, and printers, it's easy for your ideas to look their best.

Apple's new, easy-to-use scanners and printers deliver higher performance and better-quality results than ever. And with our extensive line of displays, you're sure to find one that's right for you—whether you're doing word processing or computer-aided design.

We've also extended our line of cross-platform products that work with Apple® Macintosh® computers and MS-DOS computers running Windows. The Apple OneScanner™ for Windows offers fast, one-step scanning, and several Apple LaserWriter® printers can accept jobs simultaneously from Macintosh and Windows computers.

In addition, the new Apple Color OneScanner and Apple Color Printer give you the advantages of working with a complete color system. By adding color photos, illustrations, charts, and graphics to your work, your ideas will have more impact and be more effective.

To make your ideas look great, take a close look at Apple's scanners, displays, and printers.

**Introducing ColorSync.**

Maintaining consistent color from scan to screen to print used to be nearly impossible. The colors of images or text on the display typically didn't match the colors on the printed document. To make the colors on the printed page more accurate, you had to do a lot of experimenting with different colors.

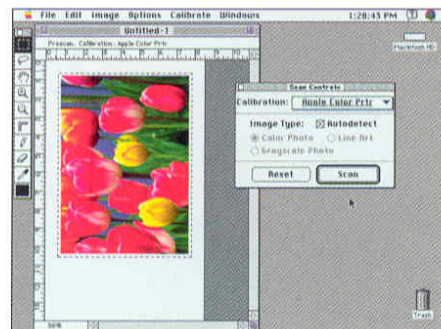
But now the Apple Color OneScanner and the Apple Color Printer come with Apple's new ColorSync™ software, which keeps color consistent from scanning to printing. And ColorSync can work with a variety of third-party printers and high-resolution imagesetters, so you can see great results with other color output devices. Best of all, the color-matching process is transparent, which means you can concentrate on doing your work instead of fixing the colors on your document. Thanks to ColorSync, you won't have to worry about your purples giving you the blues again.



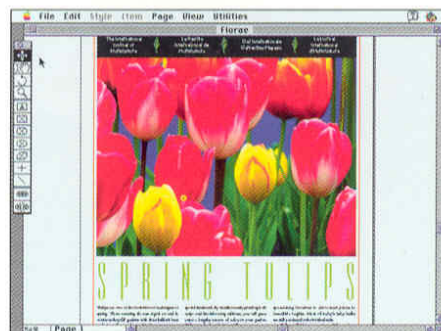
*Every Apple  
OneScanner  
makes it  
exceptionally  
easy to add  
images to  
your work.*



*Simply choose  
a printer from  
the Scan Controls  
window, then  
click the Scan  
button. The  
OneScanner  
does the rest.*



*Once an image  
is scanned, you  
can size it and  
place it into  
virtually any  
application.*



**Photographic-quality images.**

Today you can put together a state-of-the-art Macintosh desktop publishing system that will give you photographic-quality images and near-typeset-quality text. This example shows an Apple OneScanner, a Macintosh Centris™ 650 computer with a Macintosh Color Display, and an Apple LaserWriter Pro 630 printer.



# Easy-to-use scanners.

Now you can choose from three Apple scanners: the Apple OneScanner, the Apple Color OneScanner, and the Apple OneScanner for Windows. All models deliver extremely high-quality images.

The Apple OneScanner and the Apple Color OneScanner come with Ofoto 2.0 software, making them very easy to use. With any OneScanner, scanning an image requires just a click of the mouse. The Apple OneScanner for Windows comes with the Windows version of Ofoto software, which is easy to use and provides the same high image quality as that of Apple's scanners for Macintosh computers.

In addition to ease of use, Ofoto 2.0 software allows you to do background scanning, which means you can continue to use your computer while your scan is being completed. Ofoto 2.0 also reduces the file size of the scan by supporting the image compression and decompression features of Apple's QuickTime™ software.

## **Professional-quality scans, one-button simplicity.**

Scanning with an Apple OneScanner and Ofoto 2.0 software exemplifies the term "ease of use." Simply choose a printer in the Scan

Controls window, then click the Autoscan button. That's it. The OneScanner does the rest. It automatically determines the appropriate setting for your printer, then scans, straightens, and crops the final image.

## **The freedom to experiment.**

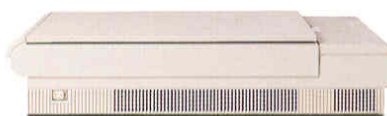
With the Apple OneScanner and Ofoto software, you can also choose your own settings for scans. Every model has interactive controls for brightness and contrast, enlargement and reduction, and image rotation. These controls allow you to see changes to your image on the screen.

Every OneScanner includes a variety of other options that enable you to customize your scans. For example, the adaptive calibration feature lets you optimize your scans for a variety of output devices or printing processes. Just print the gray or color chart on the output device you want to use, then scan the printed chart on the OneScanner. Ofoto automatically generates a custom calibration setting. You can also calibrate the OneScanner so it will optimize your scans for different types of paper, software, and printing effects.



### **Apple OneScanner for Windows**

*This gray-scale scanner brings the simplicity of one-button scanning to Windows systems. It's perfect for enhancing your documents with photographs, maps, text, architectural plans, illustrations—you name it.*



### **Apple OneScanner**

*The Apple OneScanner produces near-photographic-quality scans with 256 levels of gray. In addition to scanning black-and-white originals, the OneScanner converts color originals into black-and-white images. The OneScanner allows you to choose a scan resolution setting from 75 to 1,200 dots per inch.*



### **Apple Color OneScanner**

*The Apple Color OneScanner delivers excellent, high-quality color scans. It features a fast, single-pass scanning process that provides accurate registration. The Apple Color OneScanner allows you to create files with the scan resolution setting of your choice: 75, 150, 300, 600, or 1,200 dots per inch.*



### **Sharp, accurate scanning.**

*Whether you're working with color or black-and-white images, there's an Apple OneScanner that's right for you. The Apple Color OneScanner takes advantage of Apple's ColorSync software to give you consistent color from scanning to printing.*

### The clear choice.

Apple designed the first Macintosh display to meet the needs of computer users who wanted to know what their finished document would look like—before they printed it.

As the graphics needs of computer users have become more sophisticated, so has the Macintosh computer. And so has every new Macintosh display.

Apple has applied its understanding of computers and users to produce displays with more than just bigger screens and more colors. Apple displays are distinguished by their unprecedented brightness, clarity, and color fidelity. They all have flat screens and sharp focus, so they're easy on your eyes. And they're designed especially for Macintosh computers, so you can be sure that the display you buy will work with the Macintosh you buy. In addition, all Apple Macintosh color displays shown in this brochure are designed to meet strict SWEDAC MPR-2 requirements for low-frequency magnetic-field emissions.

Every Apple display is easy to connect to your Macintosh. Just plug the cable into your display and your computer. That's it. When you turn on your computer, it automatically adjusts to the size and type of display you're using—you don't have to set any switches or type any commands. Additional display settings are controlled from your Macintosh.



#### Macintosh 21-inch Color Display

*Our top-of-the-line display shows two full 8.5-by-11-inch pages of color text and graphics. The Macintosh 21-inch Color Display establishes a new standard for sharp focus and high quality.*



#### AppleCD 300 and AppleCD 150

The AppleCD<sup>™</sup> 300 and AppleCD 150 are CD-ROM drives that give you access to text, graphics, and sounds stored on CD-ROM discs. With the AppleCD 150 or the faster AppleCD 300 connected to your Macintosh, you can copy information, such as a photograph or clip art, from a copyright-free CD-ROM disc and paste it into the application you're using. You can also take advantage of Kodak's new Photo CD technology. With Photo CD, images from film you've shot with your camera can be stored on CD-ROM discs. These images can then be displayed on your Macintosh and used in Macintosh applications.



# Clear, bright displays.



## **Macintosh 16-inch Color Display**

Brilliant images and a large work area make this display ideal for high-performance systems. Its Sony Trinitron® picture tube shows the full width (including margins) and three-quarters of the length of a letter-size page, as well as additional display area for easy access to your Macintosh desktop icons.



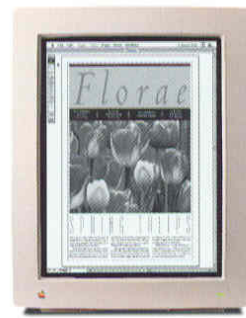
## **Macintosh Color Display**

A high-quality color display that provides exceptional brightness, clarity, and color fidelity at an affordable price. It features a Sony Trinitron picture tube that displays sharp text and graphics. This 14-inch display can show the full width (including margins) and more than half the length of a letter-size page.



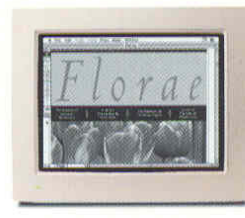
## **Apple Basic Color Monitor**

This 14-inch VGA display is our most affordable color model. It can show the full width (including margins) and more than half the length of a letter-size page.



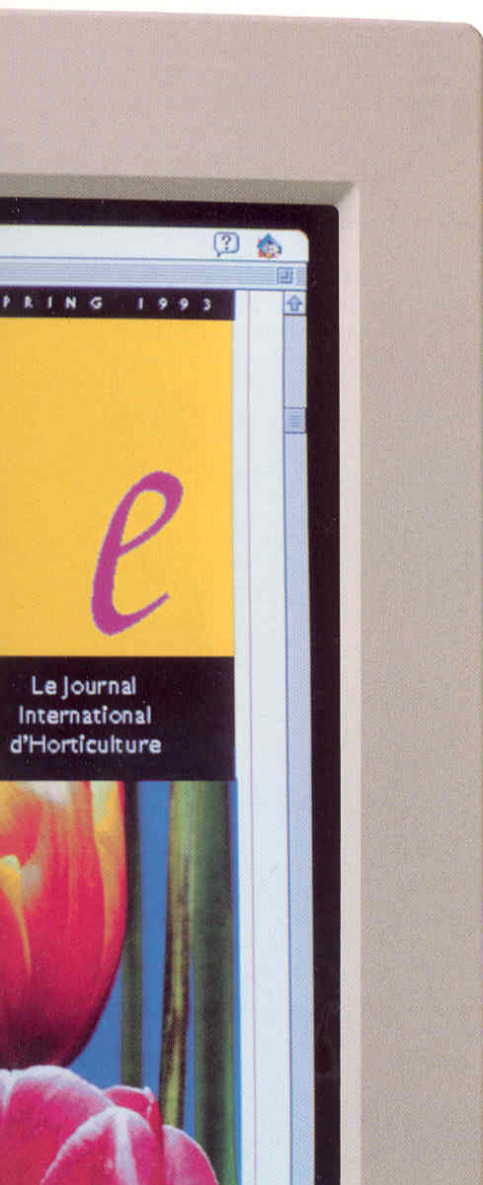
## **Macintosh Portrait Display**

Displays an entire 8.5- by 11-inch page. The ideal display for word processing and desktop publishing.



## **Macintosh 12-inch Monochrome Display**

Displays the full width (including margins) and more than half the length of a letter-size page. An economical entry-level display.



Every Macintosh color display works with Apple's new ColorSync software. With ColorSync, the colors on your display will match those of your scanned images, and the colors on your printed output will match those on your display.



## **Macintosh Display Card 8•24**

The Macintosh Display Card 8•24 enables any Macintosh color monitor to display 256 colors and some monitors to display more than 16 million colors, producing photographic-quality images. This card also provides 256 levels of gray for photographic-quality black-and-white images on any Macintosh monochrome or color display.



## **Add a second display.**

If you're working with spreadsheet, page-layout, or computer-aided design applications, you may want to increase your on-screen work area by adding a second display to your Macintosh system. Just insert the appropriate video card into your Macintosh and connect the new display. Your Macintosh will treat the combined screen area of two (or more) displays as a single work space.

## Setting new standards.

Apple printers continue to set new standards for print quality and ease of use. Whether you're printing on our personal printers or our powerful, cross-platform printers, your output will look sensational.

Thanks to innovations such as TrueType™, Apple's outline font technology, even the lowest-priced Apple printers deliver clean, sharp type at any size. And several of our printers work with Apple's FinePrint™ and PhotoGrade™ technologies to print text, line art, and scanned photographs with unprecedented detail and clarity.



### Apple LaserWriter Pro 630

The LaserWriter Pro 630 is a 600-dot-per-inch printer that can print up to eight pages per minute. It offers built-in support for Apple's PhotoGrade technology for printing high-quality images, as well as Apple's FinePrint technology for printing smooth text and line art. It also supports Adobe™ PostScript™. The LaserWriter Pro 630 can accept jobs simultaneously from Macintosh and Windows computers on multiple networks, including EtherTalk® networks. It comes with two SCSI ports for hard disk font storage. The LaserWriter Pro 630 holds up to 850 sheets of paper. (It comes with 100-sheet and 250-sheet paper trays, and an optional paper tray holds 500 sheets of paper.) A 75-envelope feeder is also available.



### Apple LaserWriter Pro 600

The LaserWriter Pro 600 can print up to eight pages per minute at a resolution of 600 dots per inch. It supports Adobe PostScript and features Apple's FinePrint technology for printing smooth text and line art. It can also take advantage of Apple's PhotoGrade technology for printing high-quality images. The LaserWriter Pro 600 can accept jobs simultaneously from Macintosh and Windows computers on multiple networks. This printer holds up to 850 sheets of paper. (It comes with 100-sheet and 250-sheet paper trays, and an optional paper tray holds 500 sheets of paper.) A 75-envelope feeder is also available.



### Apple Personal LaserWriter NTR

The high-performance Personal LaserWriter NTR is a RISC-based printer that supports Adobe PostScript. It can be used by individuals and groups in environments that have both Macintosh and Windows computers. The Personal LaserWriter NTR prints at 300-dot-per-inch resolution, and it can accept print jobs simultaneously from Macintosh and Windows computers on multiple networks. A 70-sheet paper tray is standard; a 250-sheet tray is optional.



### Apple LaserWriter Select 310

The LaserWriter Select 310 is an affordable personal laser printer that supports Adobe PostScript. This printer works with either Macintosh or Windows computers and prints at 300-dot-per-inch resolution. It features a RISC processor for fast text printing. The LaserWriter Select 310 comes with a 250-sheet paper tray; with optional trays, it can hold up to 800 sheets.



### Apple LaserWriter Select 300

The LaserWriter Select 300 is an expandable LaserWriter printer that's perfect for personal use. It takes advantage of Apple's FinePrint technology so your text and line art will look smooth and sharp, and you can add PhotoGrade for high-quality images. An option that supports Adobe PostScript is also available. The LaserWriter Select 300 prints at 300-dot-per-inch resolution, and it can be shared with other Macintosh users via Apple's GrayShare™ software. This printer comes with a 250-sheet paper tray; with optional trays, it can hold up to 800 sheets.

Connecting an Apple printer to a Macintosh computer is easy. All you have to do is connect a cable from the printer to the Macintosh. There's no need to set any switches, reconfigure any boards, or type any cryptic commands.



Our efforts to set new standards for printing haven't gone unnoticed. In a recent study by J.D. Power and Associates, Apple laser printers ranked highest in overall laser printer customer satisfaction.\*

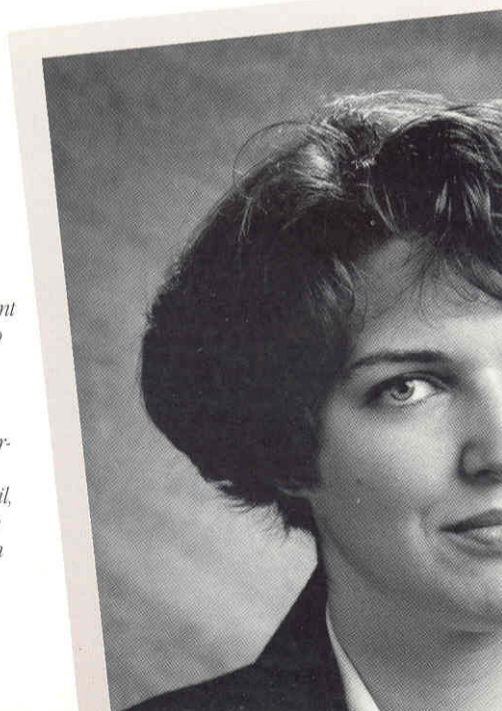
Output from a LaserWriter printer with PhotoGrade

Original photograph



### Printers that make the grade.

Apple's PhotoGrade technology enables the LaserWriter Pro 600 and 630 to deliver the highest print quality available among desktop printers. (With an optional upgrade, the LaserWriter Select 300 also supports PhotoGrade.) PhotoGrade enhances the appearance of printed photographs, or halftones. They retain more detail, because they contain a finer line screen and more gray levels than output from other laser printers.



# Versatile, high-quality printers.



## Apple StyleWriter II

The StyleWriter® II brings convenient, laser-quality printing to your desktop. It's compact in size, weighs only six pounds, and operates very quietly. The StyleWriter II prints at 360-dot-per-inch resolution and offers gray-scale printing. It can be shared with other Macintosh users via Apple's GrayShare software. This printer comes with a multipurpose paper tray that holds 100 sheets of paper or 15 envelopes.



## Apple ImageWriter II

The ImageWriter® II is an affordable dot-matrix printer for personal or professional use. The ImageWriter II offers a range of output options for text and graphics, from draft mode to near-letter-quality mode. It's ideal for printing on continuous-form paper, such as payroll checks or preprinted forms. And because it's an impact printer, the ImageWriter II also enables you to print on multisheet forms.



## Apple Color Printer

The Apple Color Printer makes it easy to add color to your documents, such as overhead transparencies, newsletters, brochures, and financial reports. It prints at 360 dots per inch, it can be shared over a network (via Apple's GrayShare software), and it uses Apple's ColorSync software to print colors that match the colors on your display and the original photograph. The Apple Color Printer works with paper sizes up to 11 by 17 inches, and has a straight paper path that prevents your output from curling. The Apple Color Printer uses sealed ink cartridges to eliminate spilling during replacement, and includes self-cleaning jets that keep ink from clogging. It comes with a multipurpose paper tray that holds up to 100 sheets of paper.

Thanks to Apple's ColorSync software, the color in this sample page printed by the Apple Color Printer was automatically adjusted to match the color of the original scanned photograph.



## Apple's GrayShare software

The StyleWriter II, LaserWriter Select 300, and Apple Color Printer come with Apple's new GrayShare software. GrayShare allows these printers to be easily shared by other users on a network, including LocalTalk® and EtherTalk networks. In addition, GrayShare software brings gray-scale printing capabilities to the StyleWriter II and the LaserWriter Select 300, so you can add clear, sharp graphics and photos to your documents. GrayShare also brings a full range of colors to the Apple Color Printer.

Output from a LaserWriter printer without PhotoGrade



## Print from any computer, any time.

All ports are simultaneously active on the LaserWriter Pro 630, the LaserWriter Pro 600, and the Personal LaserWriter NTR printers, which means that they can be used with Macintosh and Windows computers on multiple networks. You can switch between the Adobe PostScript and PCL page-description languages via software as needed, depending on the type of computer that is printing. This feature eliminates the need to turn the printer off and on or to set switches manually whenever you print from different computers.



\*J.D. Power and Associates, 1992 Computer End User Satisfaction Study, Printers. The study was conducted among 1,707 U.S. business end users at 848 business sites.

# Compare the facts.

## Apple Scanners

	Gray levels/Colors	Scan resolution settings	Sensor	Scan area	Interface	Software	Compatibility
<b>Apple OneScanner</b>	256 gray levels	75, 150, 300, 600, and 1,200 dots per inch (dpi)*	One 300-dpi charge-coupled device (CCD)	8.5 x 14 inches	SCSI	Ofoto 2.0	Macintosh computers
<b>Apple OneScanner for Windows</b>	256 gray levels	Up to 300 dpi	One 300-dpi CCD	8.5 x 14 inches	SCSI card (included)	Ofoto 1.0	Macintosh and Windows computers
<b>Apple Color OneScanner</b>	16.7 million colors	75, 150, 300, 600, and 1,200 dpi*	Three 300-dpi CCDs	8.5 x 14 inches	SCSI	Ofoto 2.0	Macintosh computers

\*Scan resolution can be adjusted in 1-dpi increments, through software interpolation.

## Apple Displays

	Size (diagonal)/Tube type	Dot/stripe pitch	Screen resolution	Screen refresh rate	ELF/VLF compliance*	Ergonomic features
<b>Macintosh 12-inch Monochrome Display</b>	12-inch monochrome cathode-ray tube (CRT)	480-line screen	640 x 480 pixels	66.7 hertz	ELF/VLF magnetic ELF/VLF electric	Antiglare screen
<b>Macintosh Portrait Display</b>	15-inch monochrome CRT with flat screen	870-line screen	640 x 870 pixels	75 hertz	—	Antiglare screen
<b>Apple Basic Color Monitor</b>	14-inch color VGA CRT	.39mm dot pitch	640 x 480 pixels	60 hertz	ELF/VLF magnetic	Tilt-and-swivel base
<b>Macintosh Color Display</b>	14-inch Sony Trinitron color CRT with flat screen	.26mm stripe pitch	640 x 480 pixels	66.7 hertz	ELF/VLF magnetic ELF/VLF electric	Automatic degaussing, tilt-and-swivel base
<b>Macintosh 16-inch Color Display</b>	17-inch Sony Trinitron color CRT	.26mm stripe pitch	832 x 624 pixels	75 hertz	ELF/VLF magnetic	Antistatic, antiglare screen; automatic degaussing; tilt-and-swivel base with easy-to-reach ports
<b>Macintosh 21-inch Color Display</b>	21-inch color CRT with flat faceplate and gray filter glass	.26mm dot pitch (horizontal)	1,152 x 870 pixels	75 hertz	ELF/VLF magnetic ELF/VLF electric	Antiglare screen; automatic degaussing; tilt-and-swivel base with easy-to-reach ports

\*Compliance with SWEDAC MPR-2 requirements for ELF/VLF (extremely low frequency/very low frequency) emissions.

## Apple Printers

	Print quality	Print speed	Paper handling	Standard fonts	Language	Controller	Interface
<b>ImageWriter II</b>	144 dpi	Draft: 2 pages per minute (ppm) Best: .5 ppm	Single sheet, tractor feed	4 fonts	QuickDraw™	—	Serial, optional LocalTalk
<b>StyleWriter II</b>	360 dpi	Draft: 2 ppm Best: 1 ppm	Multipurpose tray (holds 100 sheets or 15 envelopes)	39 scalable TrueType fonts	QuickDraw	—	Serial, GrayShare printer-sharing software
<b>LaserWriter Select 300</b>	300 dpi with FinePrint; with optional upgrade, can use PhotoGrade	5 ppm	250-sheet tray; optional 250- and 500-sheet trays, 50-sheet multipurpose tray	39 scalable TrueType fonts	QuickDraw	—	Serial, GrayShare printer-sharing software
<b>LaserWriter Select 310</b>	300 dpi	5 ppm	250-sheet tray; optional 250- and 500-sheet trays, 50-sheet multipurpose tray	13 scalable PostScript fonts	Adobe PostScript Level 1	AMD 29205 RISC processor	Serial, parallel
<b>Personal LaserWriter NTR</b>	300 dpi	4 ppm	70-sheet multipurpose tray; optional 250-sheet tray	64 scalable fonts in TrueType and PostScript format	Adobe PostScript Level 2, PCL 4+	AMD 29005 RISC processor	LocalTalk, serial, parallel; all ports simultaneously active
<b>LaserWriter Pro 600</b>	600 dpi, or can use PhotoGrade and FinePrint at 300 dpi	8 ppm	100- and 250-sheet trays; optional 500-sheet tray and 75-envelope feeder	64 scalable fonts in TrueType and PostScript format	Adobe PostScript Level 2, PCL 4+	25-MHz 68030 processor, ASICs	LocalTalk, serial, parallel; all ports simultaneously active
<b>LaserWriter Pro 630</b>	600 dpi, or can use PhotoGrade and FinePrint at 300 dpi	8 ppm	100- and 250-sheet trays; optional 500-sheet tray and 75-envelope feeder	64 scalable fonts in TrueType and PostScript format	Adobe PostScript Level 2, PCL 4+	25-MHz 68030 processor, ASICs	EtherTalk, LocalTalk, serial, parallel; all ports simultaneously active; two SCSI ports (internal and external) for hard disk font storage
<b>Apple Color Printer</b>	360 dpi	2 minutes per page (speed depends on the computer's processor speed)	Multipurpose tray holds up to 100 sheets of 8.5- x 11-inch/A4-size paper or 50 sheets of 11- x 17-inch/A3-size paper	64 scalable TrueType fonts	QuickDraw	—	SCSI; GrayShare printer-sharing software

Your authorized Apple reseller or representative can answer questions about the products described in this brochure. You'll also want to ask about the one-year limited warranty that comes with all Apple hardware

products, and about AppleCare®, our extended service plan.

For the name of the authorized Apple reseller or representative in your area, call 1-800-446-3000, ext. 445.

Apple Computer, Inc.  
20525 Mariani Avenue  
Cupertino, California 95014

© 1993 Apple Computer, Inc. All rights reserved. Apple, the Apple logo, EtherTalk, ImageWriter, LaserWriter, LocalTalk, Macintosh, and StyleWriter are registered trademarks of Apple Computer, Inc. AppleCD, ColorSync, FinePrint, GrayShare, Macintosh Centris, OneScanner, PhotoGrade, QuickDraw, QuickTime, and TrueType are trademarks of Apple Computer, Inc. AppleCare is a registered service mark of Apple Computer, Inc. Adobe, PostScript, and the PostScript logo are trademarks of Adobe Systems Incorporated, which may be registered in certain jurisdictions. MS-DOS is a registered trademark, and Windows is a trademark, of Microsoft Corporation. Ofoto is a trademark of Light Source, Inc. PCL is a registered trademark of Hewlett-Packard Company. Photo CD is a trademark of Eastman Kodak Company. Trinitron is a registered trademark of Sony Corporation. Product information is subject to change without notice.

Printed in the U.S.A. 1/93 GAC/JW 50K L0079LL/E



Printed on recycled paper.

